

Instructions:

① Head
② Shaft

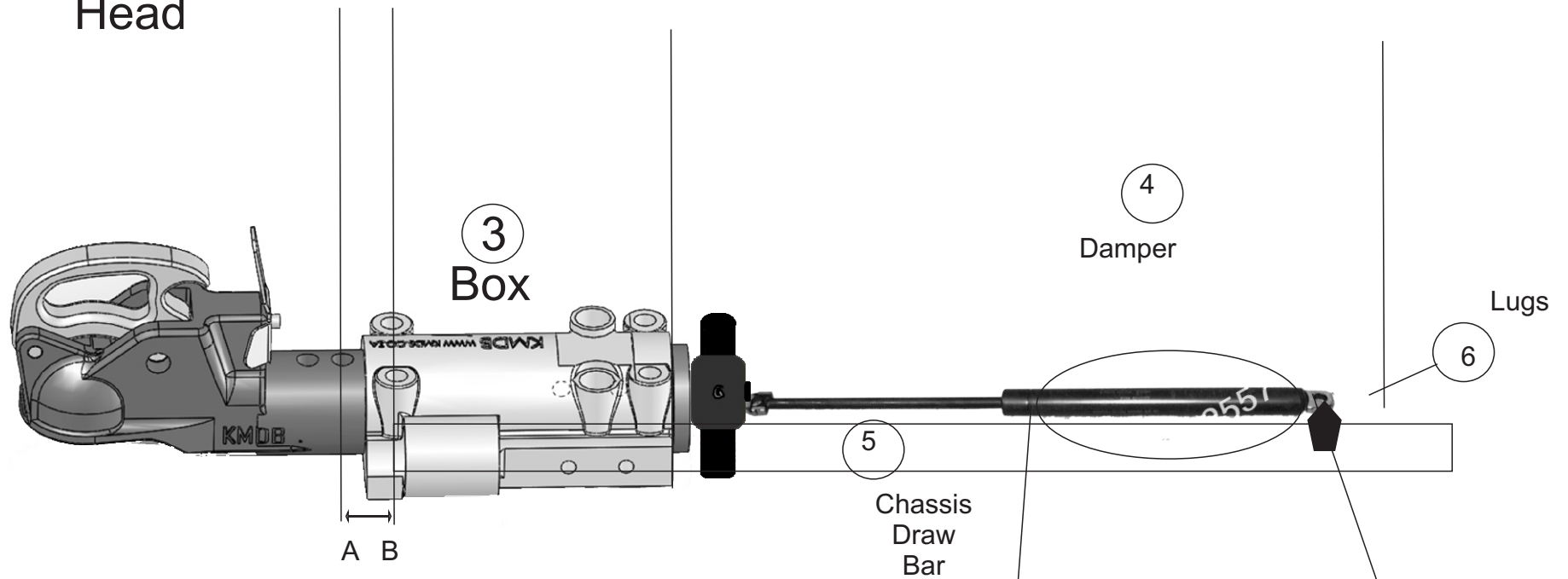


Figure 1

- Fit coupler box (3) to the draw bar (5), bolting where holes have been provided.
- Measure travel distance of shaft (2) and determine maximum travel distance of A - B
- Measure travel distance of the damper (4) , distance C - D in Figure 2.
- Position the damper (4) on the draw bar (5) ensuring that the distance from C-D is greater than the distance of A-B
- Weld the mounting lugs (6) in that position.

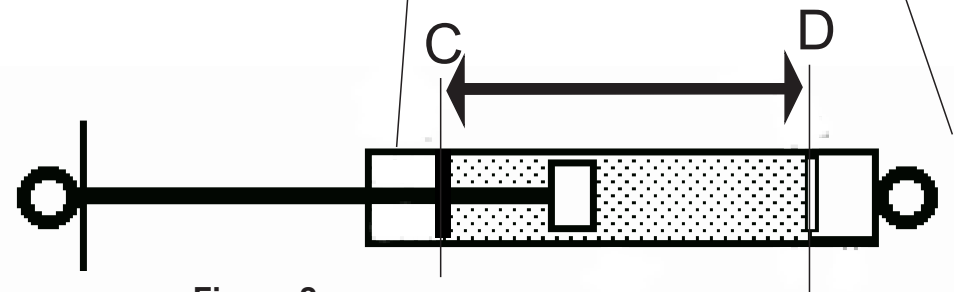


Figure 2